

# PROFICY BATCH EXECUTION FROM GE VERNOVA



Consistent manufacturing control without complex programming

## Ensure production consistency and flexibility according to ISA-88

Proficy Batch Execution from GE Vernova is a powerful and feature-rich batch automation solution. The software provides a straightforward application development environment, empowering process owners to quickly and efficiently deploy batch automation, regardless of the underlying equipment.

The solution includes data collection, robust batch management, clear process visualization, and powerful supervisory control capabilities—enabling a complete batch solution for life sciences, food and beverage, consumer goods and specialty chemical industries

## OUTCOMES

- Reduce waste and increase product quality
- Increase efficiency and reduce costs
- Enable fast deployment with lower total cost of ownership
- Automation reduces human error
- Achieve maximum flexibility in a multi-product multi-batch environment

**NEW!** Operators can use a web client such as Proficy Operations Hub to interact with Proficy Batch Execution.

## 01 Powerful and easy recipes

Write, schedule and execute recipes that have sequence variations and compose drastically different recipes without having to modify PLC code. Based on the S88 model with the concept of classes, you can build recipes to run on any units within a class and gain greater agility.

## 02 Operator views and control

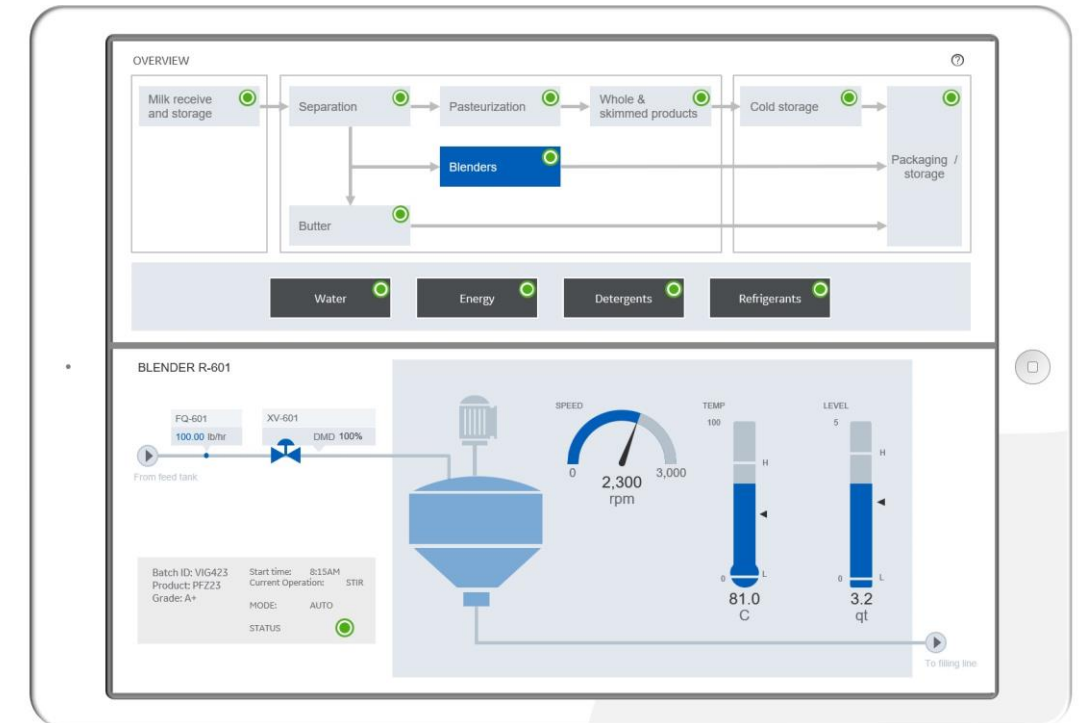
Batch visualization can be incorporated into your GE Digital HMI/SCADA Screens. Procedures can be seen in a Sequential Function Chart (SFC), table, event journal. Work Instruction provides the operator with a sequence of steps to properly execute a batch. Campaign Manager allows for automatic scheduling of batches.

## 03 Improved security and compliance

Proficy Batch Execution delivers point-of-entry verification through Electronic Signatures in the active controls and Recipe/Equipment editors—supporting 21 CFR Part 11 compliance by enabling equipment and recipe auditing and version control. It also centralizes the storage location for e-records with encrypted store-and-forward technology that automatically provides a runtime and configuration audit trail.

"When it came to the point of implementation, we were pretty confident that it would work first time – and it did. The Batch Execution System worked properly right from outset."

-- Chris Barlow, Technical Director, Novotek Solutions -- about Reckitt Benckiser optimization



## 04 Open & layered solution

Proficy Batch Execution seamlessly integrates with any OPC-compliant HMI/ SCADA, MES/ERP, PLC-based or DCS system, allowing OPC browsing to establish connection and automatic creation of tags, incorporating alarm and control changes.

## 05 Smarter and faster development

The software solution delivers a fast, simple, and effective batch development platform, which allows you to model your plant floor equipment, add equipment paths, equipment priority and status, and create and manage reusable recipe components.

# PROFICY BATCH EXECUTION FROM GE VERNOVA



Consistent manufacturing control without complex programming

## Features

- ISA S88.01 Compliant System provides a standard structure for your plant floor, simplifying the development of batch systems.
- Optional REST APIs: Operators can use a web client such as Proficy Operations Hub to interact with Proficy Batch Execution. Supports recipe management, batch execution, and electronic work instructions.
- IEC 61131-3 Sequential Function Chart programming language provides a simple graphical language for developing procedure flow in recipes.
- Formulation Management allows engineers to reuse validated recipe procedures with predefined parameter sets.
- Campaign Management simplifies the operator experience of fulfilling large process orders by accepting a process order and scheduling a list of batches.
- Transition Breakpoints allow engineers to temporarily pause a batch during execution.

## Software Requirements

- Windows 7, 8, or 10
- Windows 2008, 2012, or 2016 Server(NOTE): Proficy Batch Execution does not install directly on any 64-bit operating system. Proficy Batch Execution does support 64-bit operating systems utilizing WOW (Windows on Windows).

Hardware and software requirements are representative and may vary by customer deployment. Please consult the product documentation for more details.



Improve your process with the proven capabilities in Proficy Batch Execution and HMI/SCADA from GE Digital. With efficient batch control and real-time monitoring, you can reduce waste, minimize operator errors, and increase product consistency.

LEARN MORE